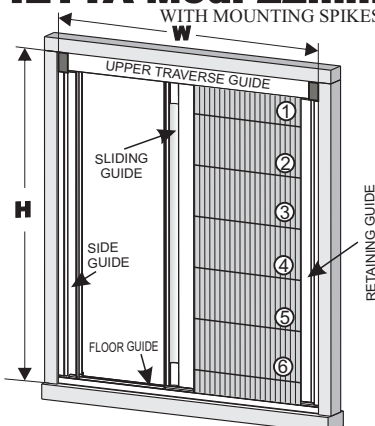


Dideco

INSTRUCTIONS FOR INSTALLATION, MAINTENANCE AND CLEANING OF THE SINGLE LEAF 22mm PIETTA SCREEN WITH MOUNTING SPIKES FOR THE INSTALLATION CREW

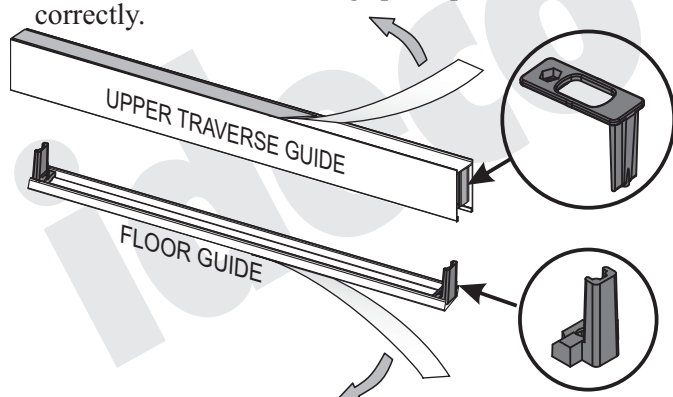
PIETTA Mod. 22mm

WITH MOUNTING SPIKES

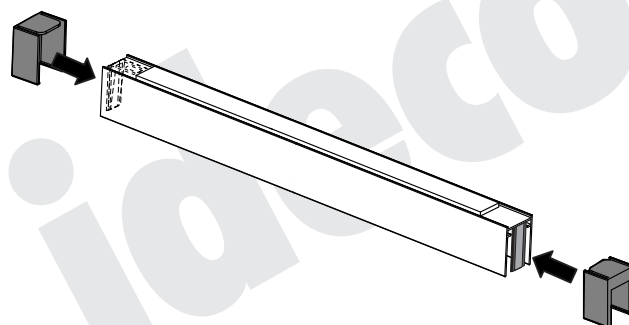


SCAN TO WATCH THE INSTALLATION
VIDEO OF PIETTA 22

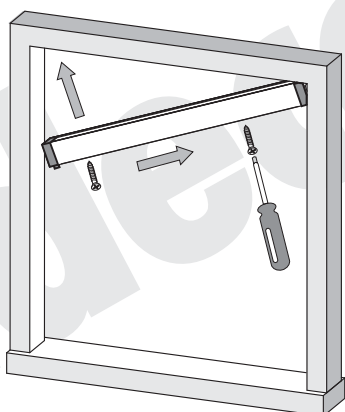
- 1 A. Removing paper from the upper traverse and floor guide adhesive tape.
B: Check that the mounting spikes parts are installed correctly.



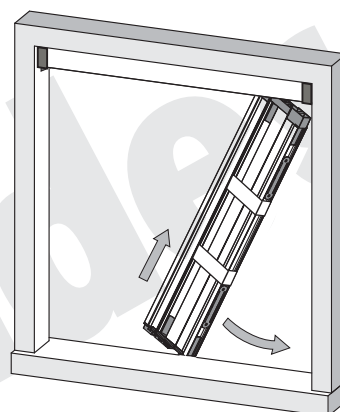
- 2 Installing the upper traverse plastic parts



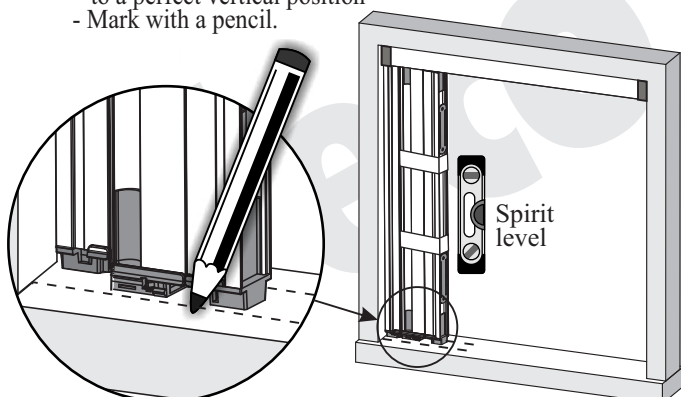
- 3 Attaching the upper traverse guide.



- 4 Temporary placing the main pietta part inside the upper traverse.

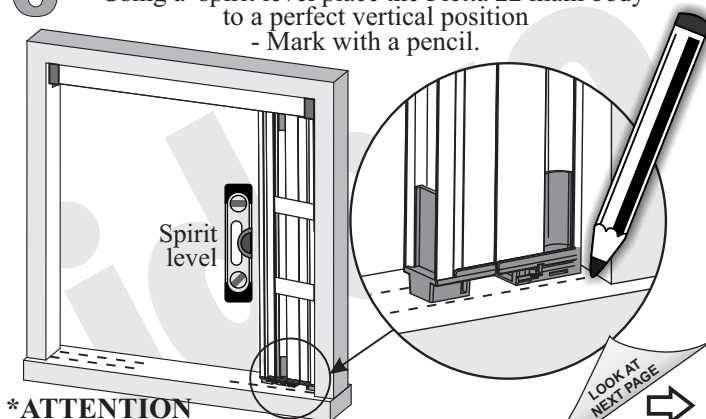


- 5 - Placing the Pietta 22 main body to the left
- Using a spirit level place the Pietta 22 main body to a perfect vertical position
- Mark with a pencil.



***ATTENTION - Do not remove the holding in tapes**

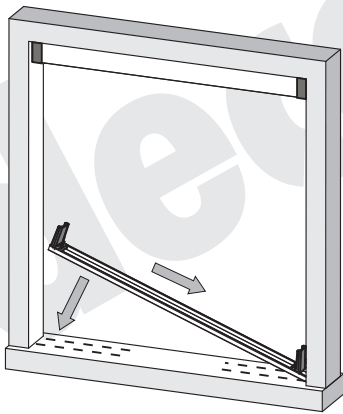
- 6 - Placing the Pietta 22 main body to the right
- Using a spirit level place the Pietta 22 main body to a perfect vertical position
- Mark with a pencil.



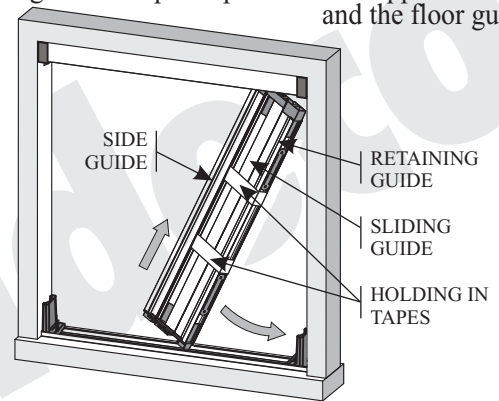
***ATTENTION
Do not remove the holding in tapes**

LOOK AT
NEXT PAGE
(Continuing...)

7 Attaching the floor guide inside the marked positions.

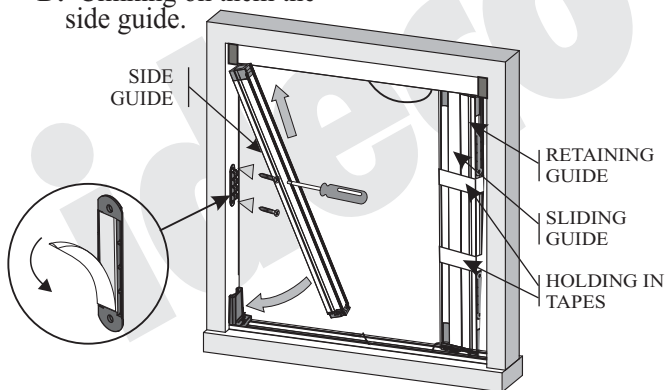


8 A. Placing the main pietta part inside the upper traverse. B. Setting the main pietta part between upper traverse and the floor guide.

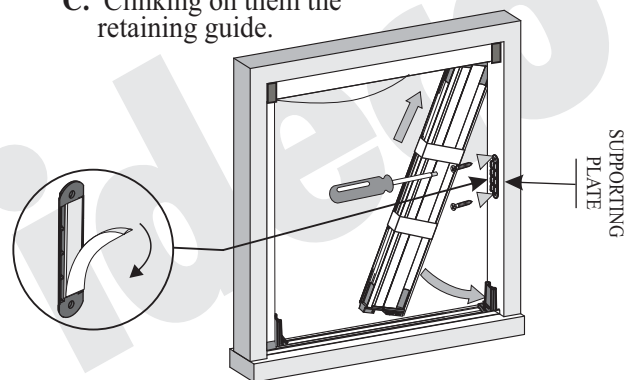


***ATTENTION - Do not remove the holding in tapes**

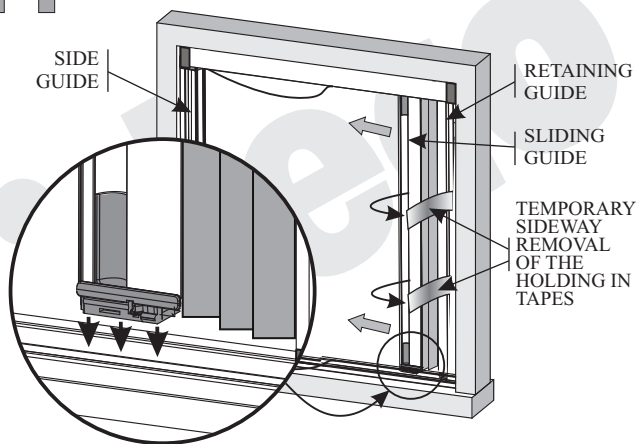
9 A. Detaching the side guide from pietta main body. B. Detaching the supporting plate from the side guide. C. Screwing in the supporting plate D. Clicking on them the side guide.



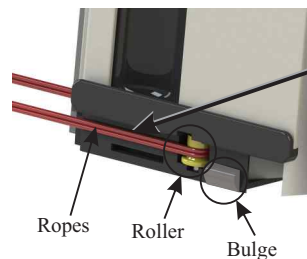
10 A. Detaching the supporting plate from the retaining guide B. Screwing in the supporting plate C. Clicking on them the retaining guide.



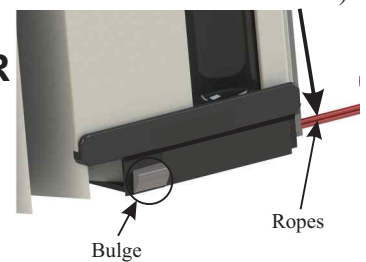
11 A. Temporary sideway removal of the holding in tapes.



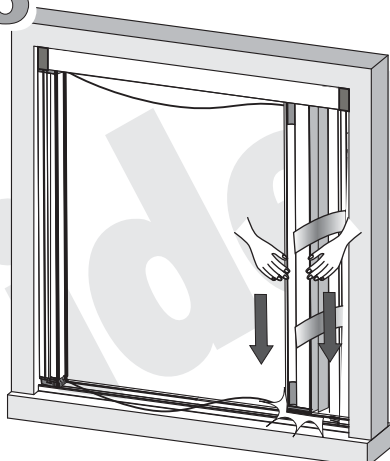
12 Mandatory inspection : Ropes should be properly placed to the right and left roller. (Pietta 22mm with no visible side rope).



OR
Optical check
(Pietta 22mm with visible cords).



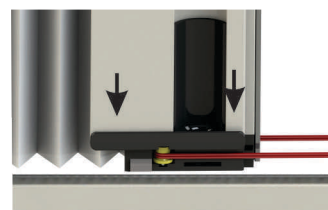
13 Placement of the sliding guide into the lower guide.



Push the sliding guide downward until the bulges engage within the lower guide.

14

BEFORE



**OUTSIDE
THE FLOOR
GUIDE**

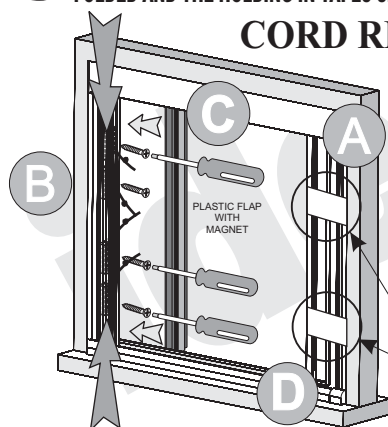
AFTER



**INSIDE
THE FLOOR
GUIDE**

15 ATTENTION! - BEFORE THE CORD REGULATING THE SCREEN MUST BE FOLDED AND THE HOLDING IN TAPES SHOULD NOT HAVE BEEN REMOVED

CORD REGULATING

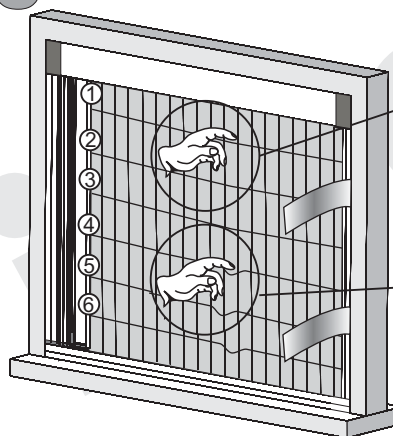


- A. Reattaching the holding in tape.
- B. Top and bottom cords regulating.
- C. Placing the plastic flap with magnet.
- D. Removing the holding in tape.

HOLDING IN TAPES

16 STRETCHING CHECK

WRONG



RIGHT

17 PROBLEMS PREVENTION

a) Pets are not allowed to pass through.

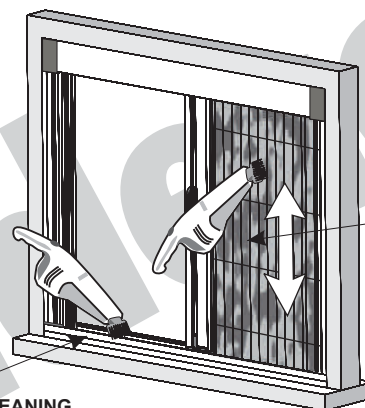


b) The screen should work easily within the guides

c) Often cleaning of the net and the floor guide.

d) During foul weather fold in the screen completely or close the french door.

18 MAINTENANCE - CLEANING



NET AND CORDS WIPING (WHEN IT IS HALF OPENED)

FLOOR GUIDE CLEANING
(DIRT ACCUMULATION ON THE FLOOR GUIDE WILL CAUSE SERIOUS MALFUNCTIONS)

19 PROBLEMS - SOLUTIONS

Difficulty in screen movement.

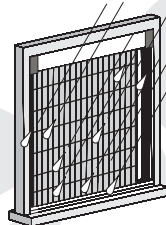
Solutions :

- a) Steps 12 and 13. The screen should work easily within the guides.
- b) Often cleaning of net and wiping of the floor guide (step 18).
- c) Preventing pets from passing through (hair will cause serious malfunctions).

Cord cutting

Solution - Prevention :

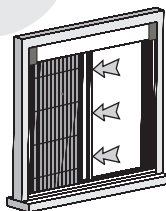
- a) Step 13 and 14 (Correct cord function within rollers)
- b) Steps 15 and 16 (Stretching check - cords regulating).
- c) Often cleaning of net and wiping of the floor guide (step 18).
- d) Pets hair will cause serious malfunctions to the screen resulting the cord cutting.



WHEN THE PLEATED NET OF SCREEN IS SOAKING BECAUSE OF RAIN OR WASHING

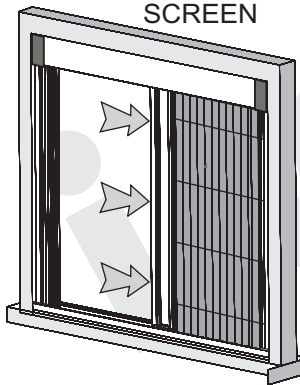
SOLUTION:

PLACE THE SCREEN IN HALF WIDTH AND STAY ON THIS POSITION FOR A FEW MINUTES, UNTIL THE FABRIC WILL DRY NATURALLY AND NOT BY USING ELECTRICAL APPLIANCE.

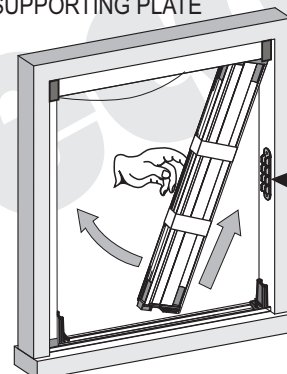


20 SERVICE (PREPARATION)

1. FOLDING THE SCREEN



2. DETACHING THE SCREEN FROM MOUNTING SPIKES AND SUPPORTING PLATE



SUPPORTING PLATE

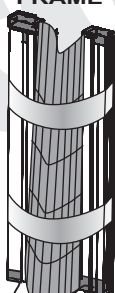
21 SERVICE (FINAL PACKAGING)

RIGHT
WITHIN FRAME



(THE NET WILL NOT BE DESTROYED DURING TRANSPORTATION)

WRONG
OUTSIDE OF THE FRAME



(THE NET MAY BE DESTROYED)

Dideco



IDECO A.B.E.
10th km, Egnatia motorway Veria - Thessaloniki,
Kouloura interchange
EN 13561